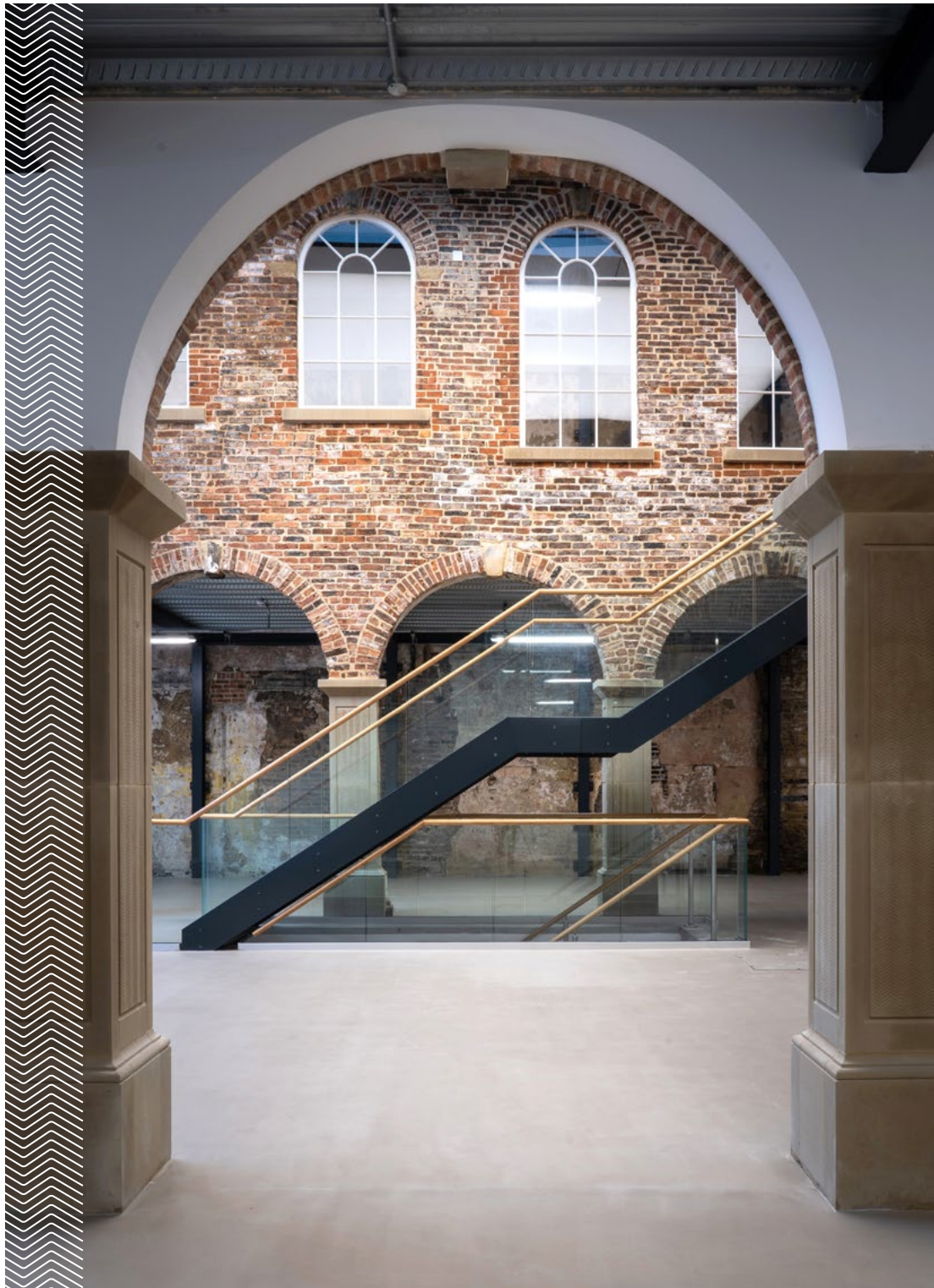


ESTABLISHED 1711



# CLOTH HALL

KIRKGATE LEEDS



# Cloth Hall Kirkgate Leeds

In the birthplace of a modern city, comes one of the most significant historical buildings, ready to write the next chapter in an exciting neighbourhood of Leeds.



# 1711

## A Leeds Original



The First White Cloth Hall was built in 1711 to provide a covered hall for cloth trading in what was then the town of Leeds. The property's 500-year-old timber trusses which supported the roof and pre-date the building have been restored and reinstalled.



THE ENTRANCE HALL AT CLOTH HALL

# Room to Think Big



Expansive spaces have been created that could be occupied in many different ways. A unique pattern of brick bonding - the pattern created by bricks when used to construct a wall - has been replicated in the new brickwork on the building's west wing.



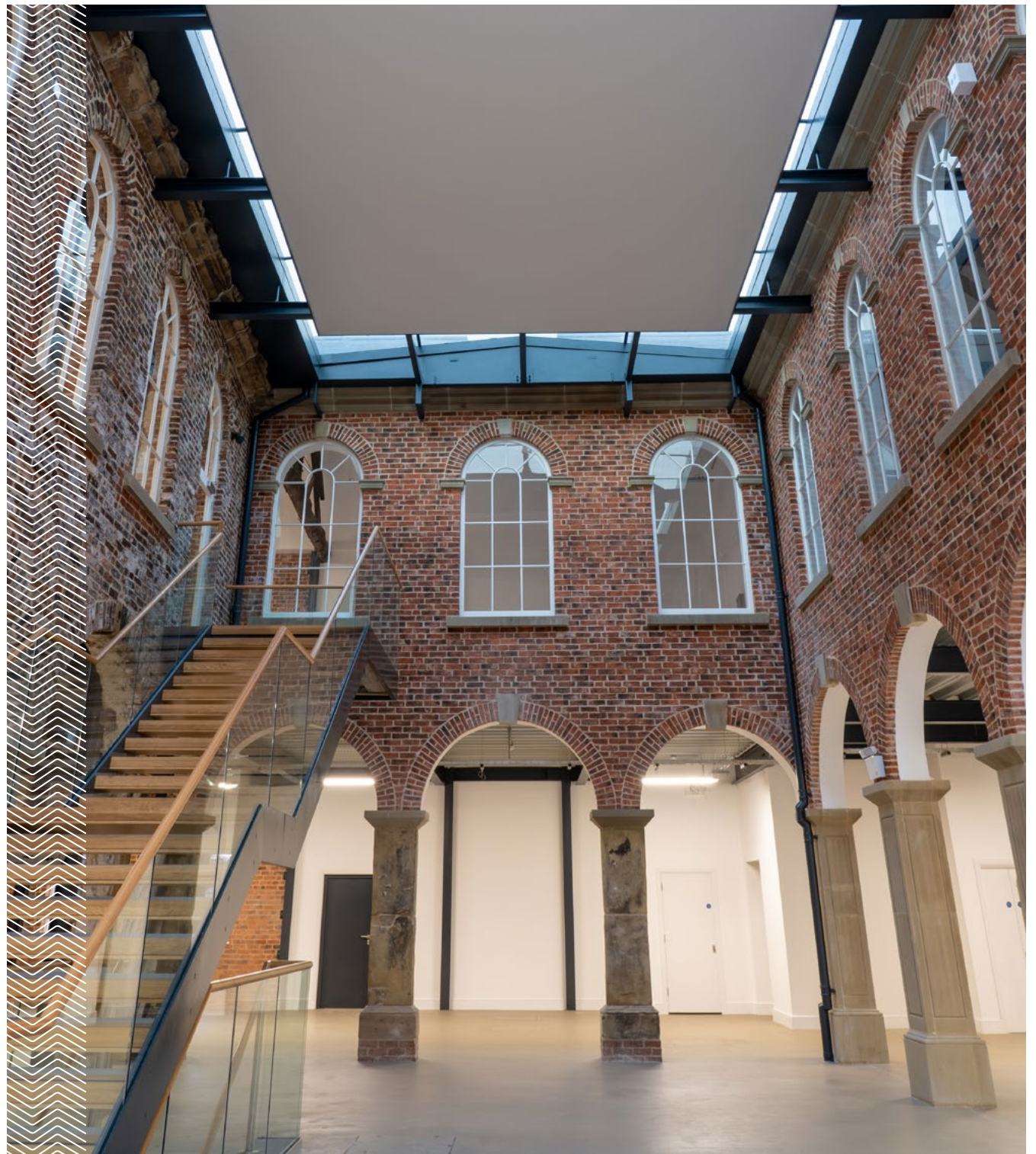
# Features

The courtyard has been glazed over and huge lighting feature installed to fill the space with light at all times of day and night.

A truly inspiring space to work or visit. First White Cloth Hall spearheaded both the commercial growth of Kirkgate, the city's oldest

commercial street, and a huge driver in the growth of Leeds' textile industry.

The building has had a transformative effect on the wider area as a key part of the wider renaissance of the Kirkgate district of Leeds.



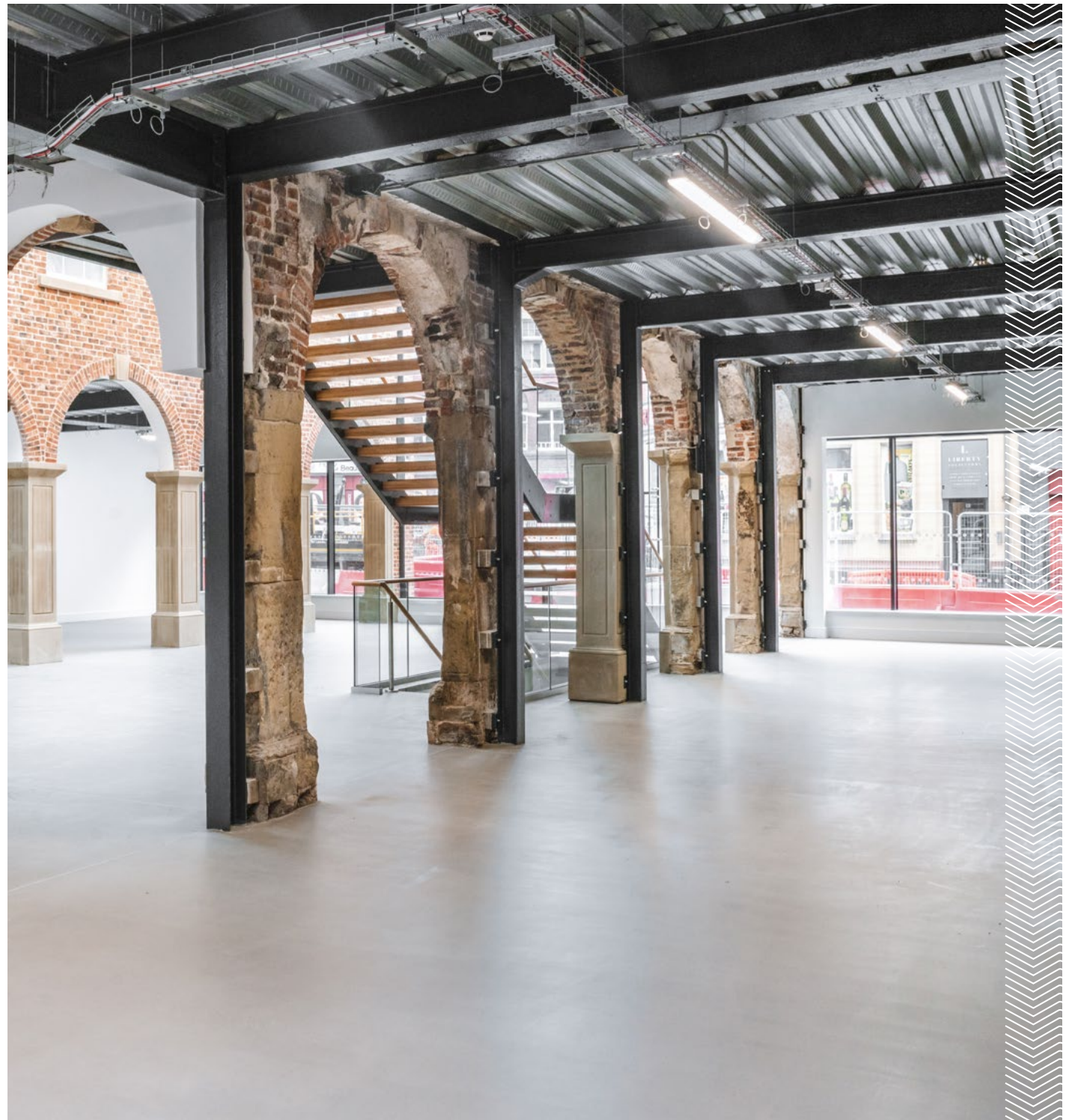
# Intricate Detail





FIRST FLOOR SPACE

# The Cathedral Effect



The high ceilings and vertical room volumes at Cloth Hall, provide the occupier with space to think big and be creative, which ultimately nurtures a more productive working environment.

J. Meyers-Levy, R. Zhu (2007)  
The influence of ceiling height



# Inspiring Space

for co-creation  
and innovation

Cloth Hall Presents an inspiring co-creation and innovation space in one of Leeds' most significant historical buildings. It provides a self contained building with a ground floor of 3,864sq ft, a galleried first floor of 2,648sq ft.

# The Neighbourhood



Surrounded by inspiring buildings and innovation in retail and leisure the Kirkgate area of the city centre is the area in which business will thrive surrounded by like minded innovators and entrepreneurs.

# Kirkgate Regeneration

Leeds Kirkgate is a place for social and economic innovation.

The real estate opportunities around Leeds Kirkgate offer the most innovative of brands space to harness the future of co-creation in inspiring buildings amongst a dynamic community.

The area around Kirkgate and the Corn Exchange is undergoing a transformation:

- Pedestrianisation of existing vehicle routes
- Wider pavements
- Huge new public realm with seating and green spaces
- Open space for events
- Statement pavilion building



The Pavilion

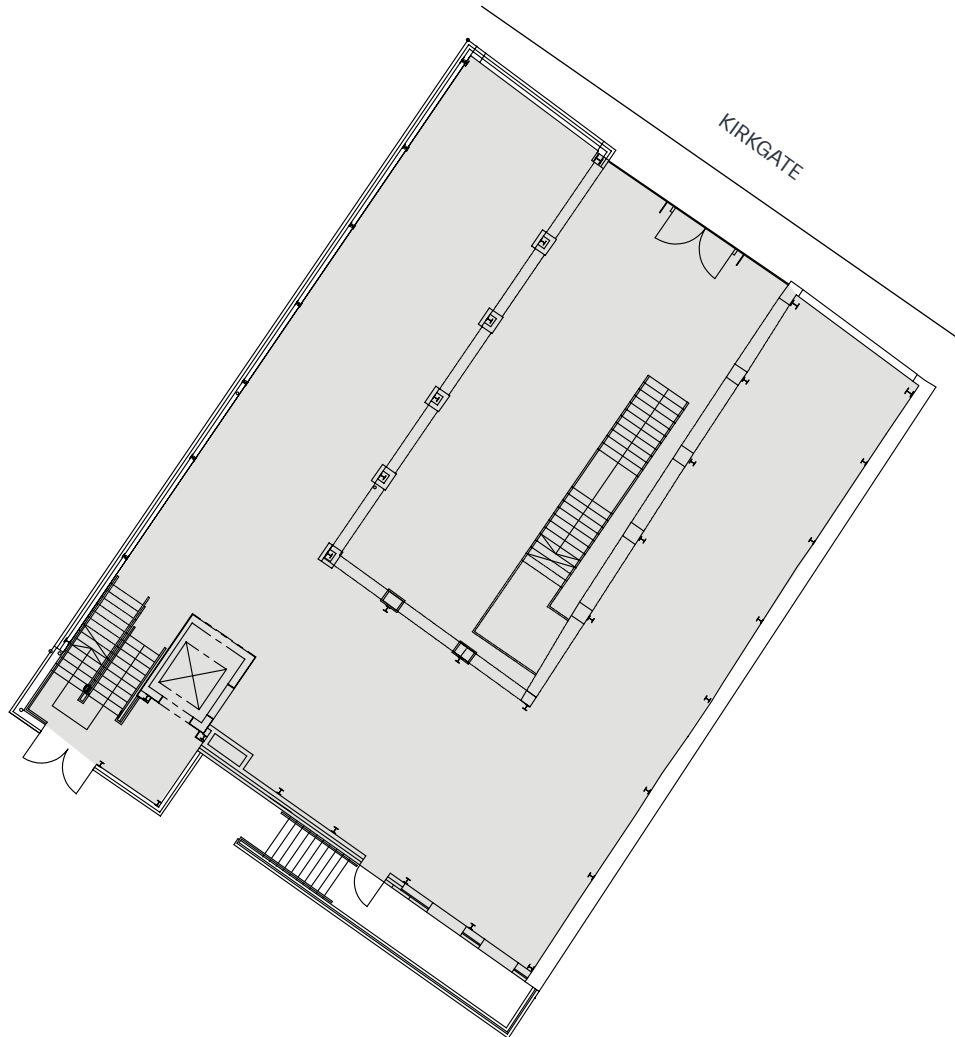
The Corn Exchange new public square

# Floor Plans

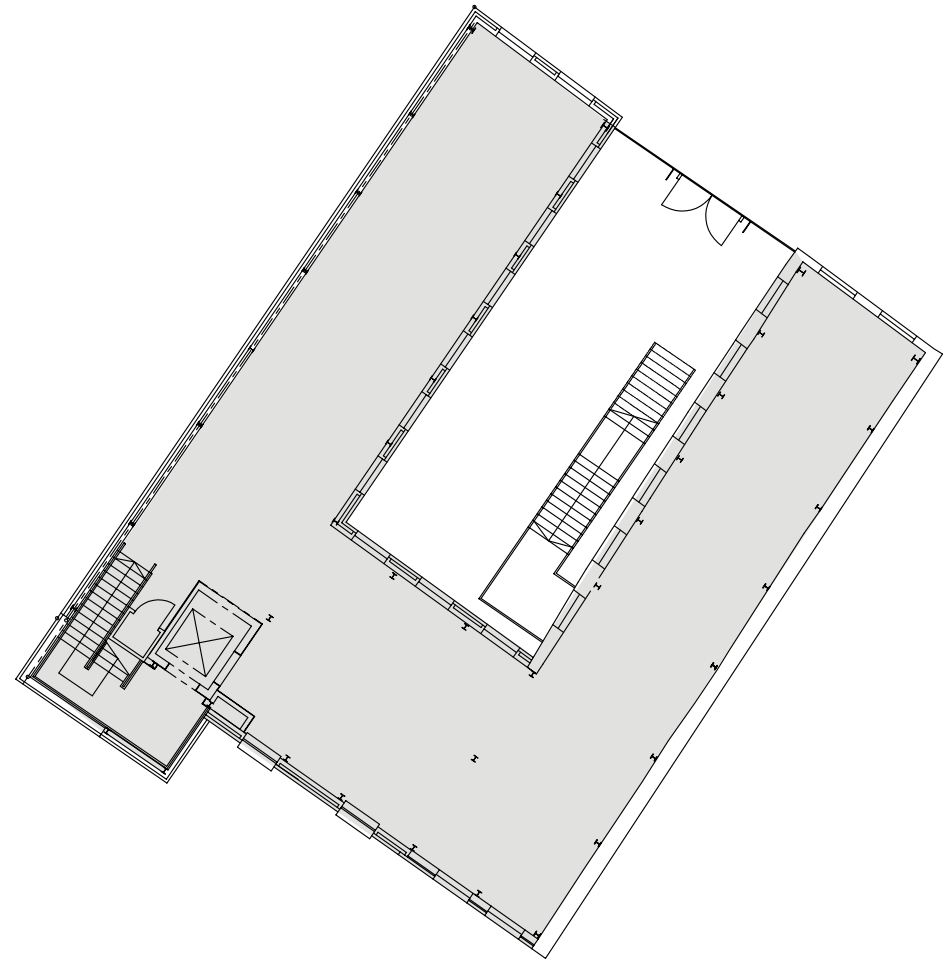


Ground Floor	3993 sq ft (371 sq m)
First Floor	2669 sq ft (248 sq m)
Basement	689 sq ft (64 sq m)
<b>TOTAL</b>	<b>7351 sq ft (683 sq m)</b>

Ground Floor

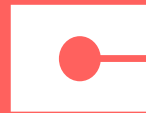


First Floor



# CLOTH HALL

KIRKGATE LEEDS LS2 7DJ



All enquiries: Eamon Fox  
[eamon.fox@knightfrank.com](mailto:eamon.fox@knightfrank.com)

A development by Rushbond PLC